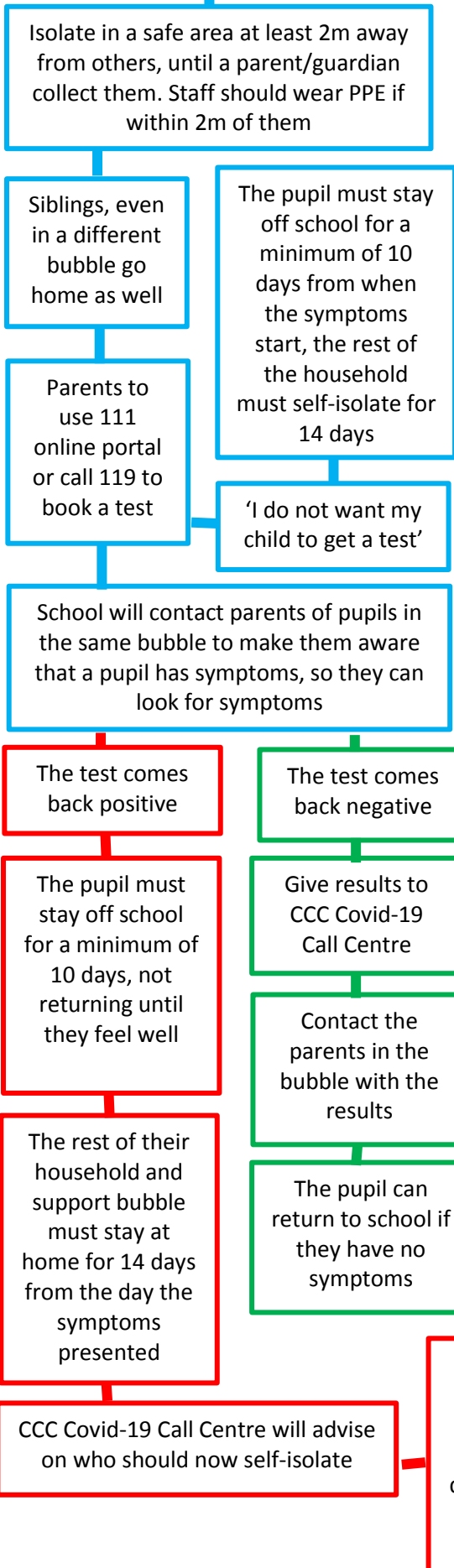


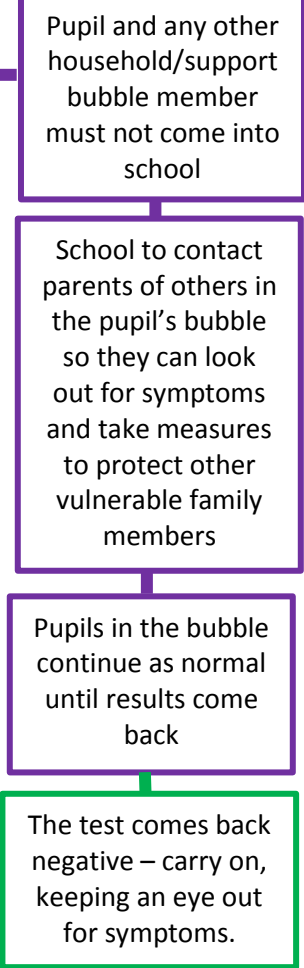
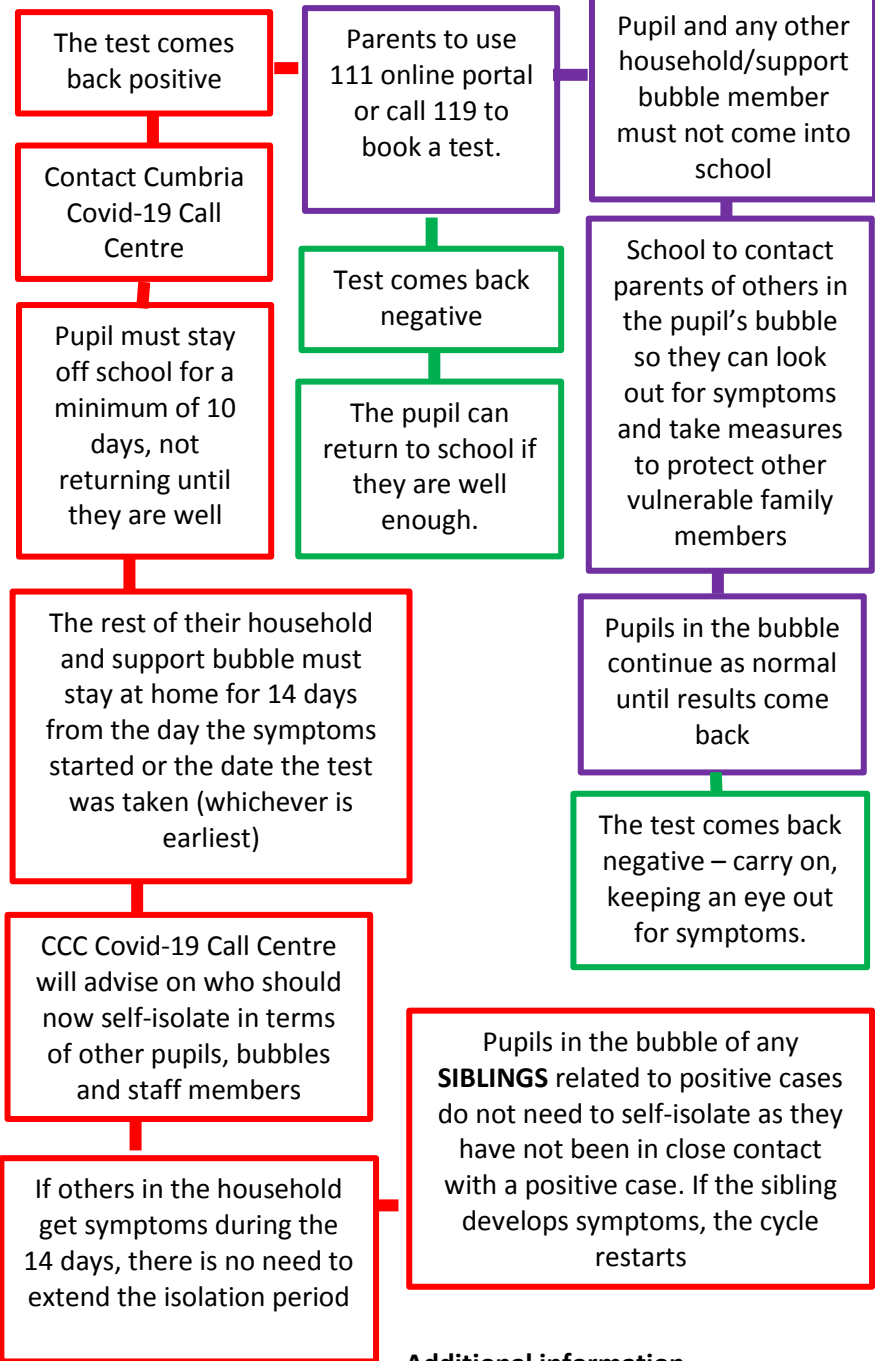
COVID-19 Flow chart  
for school settings  
V1 08/09/2020



**A PUPIL HAS SYMPTOMS AT SCHOOL**



**A PUPIL HAS SYMPTOMS AT HOME**



**Additional information**

- Symptoms are a dry, continuous cough where it is hard to catch a breath, a high temperature, loss of or change in taste and smell
- If Parents are struggling to get a test, schools can refer a pupil to the NHS by calling the CCC Covid-19 Call Centre. The school must contact them and under no circumstances should the Covid-19 Call Centre number be given out. Adults/parents cannot get a test via NHS referral.
- PPE may be required: a fluid resistant surgical mask if staff cannot maintain a 2m distance from the pupil; disposable gloves and apron also advised if direct personal care/contact is required; a visor/eye protection if there is a risk of splashing in the eyes (spitting, coughing/vomiting etc.).